

HORUS®
PHOTOVOLTAIC
PROTECTION

QUICK GUIDE

HORUS[®]

PHOTOVOLTAGIC PROTECTION

fuse links & fuse holders for photovoltaic applications

Photovoltaic, or PV for short, is a technology that converts light directly into electricity. Photovoltaic is also the field of study relating to this technology and there are many research institutes devoted to work on photovoltaic.

Due to the growing need for solar energy, the manufacture of solar cells and solar photovoltaic array has expanded dramatically in recent years, making it the world's fastest-growing energy technology.

DF ELECTRIC develops specific fuse links and fuse holders to offer a compact, safety and economic protection solution in photovoltaic installations.

Cylindrical & NH fuse links with voltages up to 1000, 1100, 1200 and 1500V DC and fuse holders with voltages up to 1000, 1100 and 1500V DC.



CYL gPV CYLINDRICAL fuse links

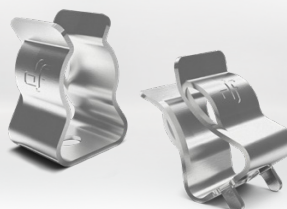
	10x38	14x51	10x85	10/14x85	22x65
U	1000V DC	1000V DC 1100V DC	1200V DC 1500V DC	1500V DC	1500V DC
In	1A...20A	25A 32A 15A 20A	20A 25A 2A...16A	20A...32A	40A...60A
BREAKING CAPACITY	30kA	30kA 10kA	10kA 30kA	30kA	30kA
STANDARDS	UL*		UL		

* 2A ... 12A



Ø10 CLIP CONTACT CYLINDRICAL Ø10 fuse links

	PCB	SCREW
U	UP TO 1500V AC/DC	
In	25A	



PMX PMX CYLINDRICAL fuse holders

**PATENTED
DESIGN**

	10x38	14x51	22x65
U	1000V DC	1100V DC	1500V DC
In	32A	50A	100A
STANDARDS	SP UL		UL



PML_e PML_e CYLINDRICAL fuse holder

**PATENTED
DESIGN**

	10x85	10/14x85
U	1500V DC	
In	32A	
STANDARDS	UL	

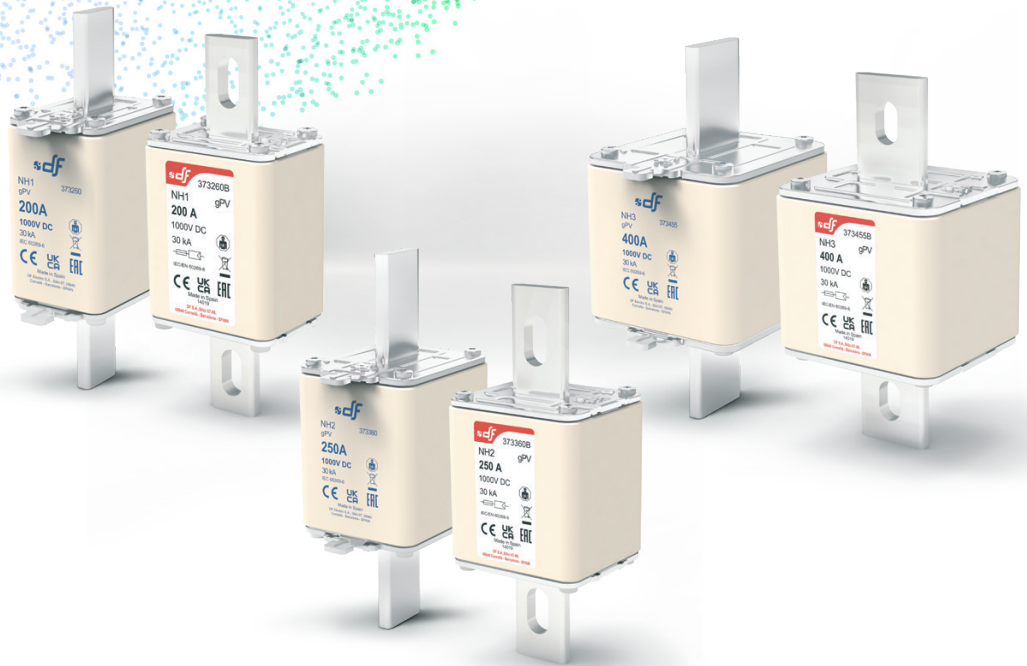


NH | gPV NH 1000V DC fuse links

	NH1	NH2	NH3
U	1000V DC	1000V DC	1000V DC
In	25A...125A 160A 200A*	200A 250A	200A 250...400A*
BREAKING CAPACITY	30kA	30kA	30kA
STANDARDS **	UL		UL

* UL PENDING

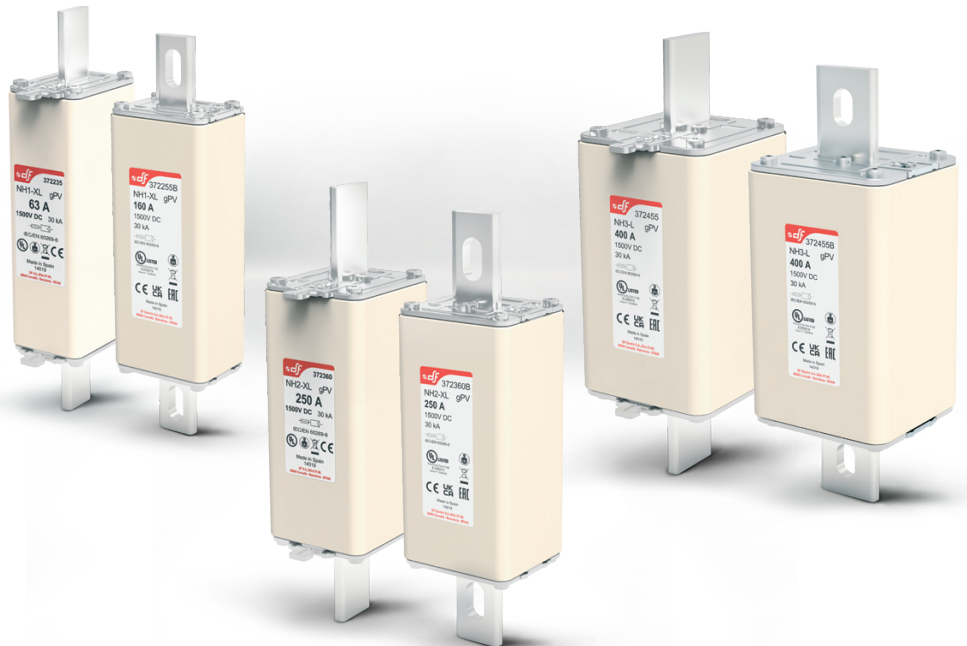
** ONLY STANDARD BLADE
BOLTED BLADE UL PENDING



NH | gPV NH XL 1500V DC fuse links

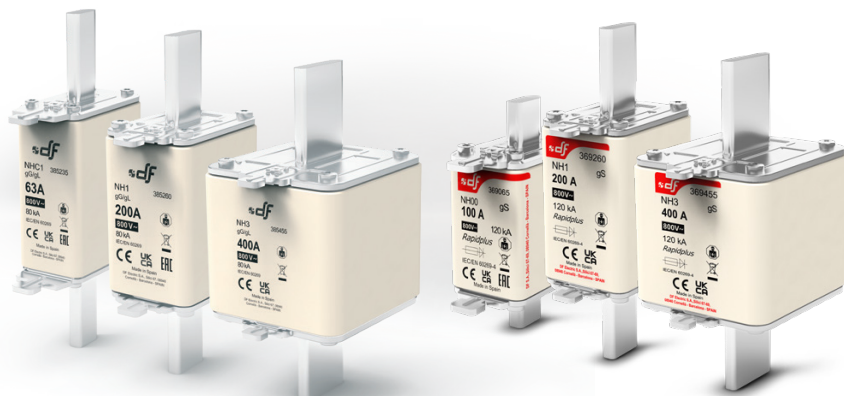
	NH1 XL	NH2 XL	NH3 L
U	1500V DC	1500V DC	1500V DC
In	40A...63A 80...200A	200A 250A	315A...400A
BREAKING CAPACITY	UL > 30kA IEC > 100kA 30kA ^{40A...63A}	UL > 30kA IEC > 100kA	UL > 30kA IEC > 100kA
STANDARDS *	UL	UL	UL

* NH1XL 200A NOT UL






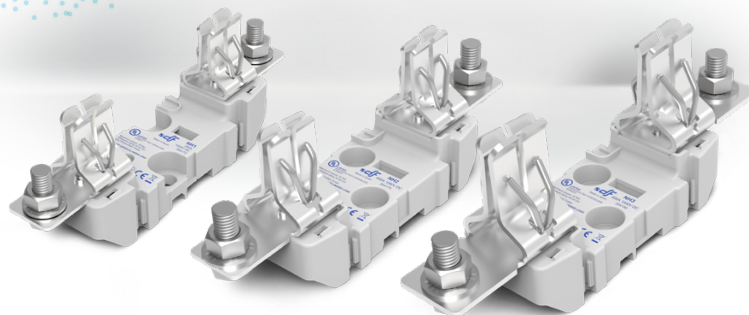
NH | gG/gL & gS NH 800V AC fuse links




	NHC1 gG	NH1 gG	NH3 gG	NH00 gS	NH1 gS	NH3 gS
U	800V AC	800V AC	800V AC	800V AC	800V AC	800V AC
In	25A...63A	80A...200A	200A...400A	25A...100A	100A...200A	250A...400A
BREAKING CAPACITY	80kA	80kA	80kA	120kA	120kA	120kA

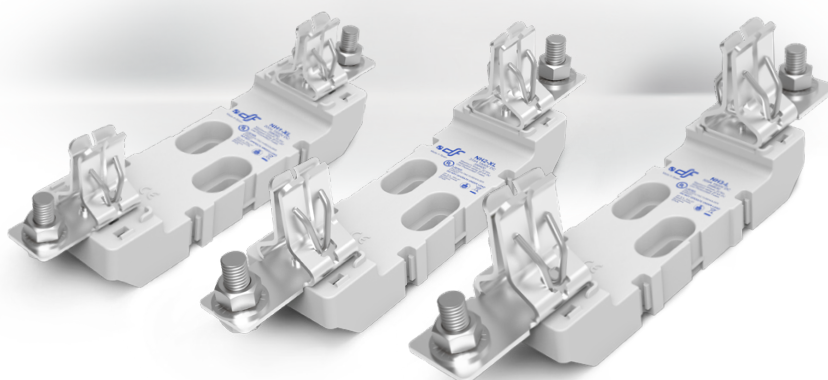


ST
ST
NH 1000V DC
fuse bases

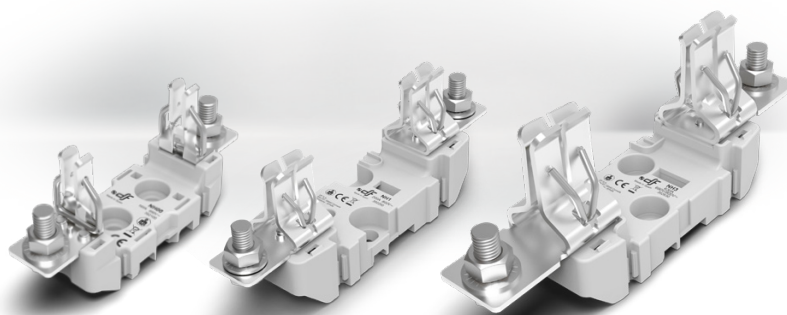

U	1000V DC	1000V DC	1000V DC
In	250A	400A	500A
STANDARDS			


ST
ST
NH XL 1500V DC
fuse bases


U	1500V DC	1500V DC	1500V DC
In	200A	315A	500A
STANDARDS			


ST
ST
NH 690V/800V AC
fuse bases


U	690V/800V AC	690V/800V AC	690V/800V AC
In	160A	250A	630A


NH
accessories
NH


MICROSWITCH

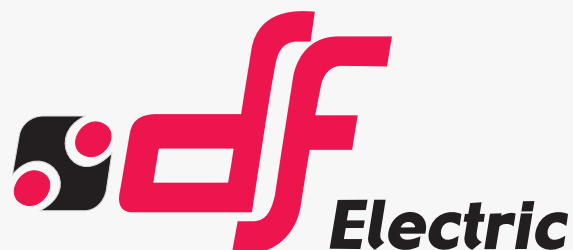


FUSE PULLER ST



FUSE PULLER XL

U	1000V DC	•	•	•
	1500V DC	•	•	•
	800V AC	•	•	•



PROTECTING THE WORLD

HEAD OFFICE AND FACTORY

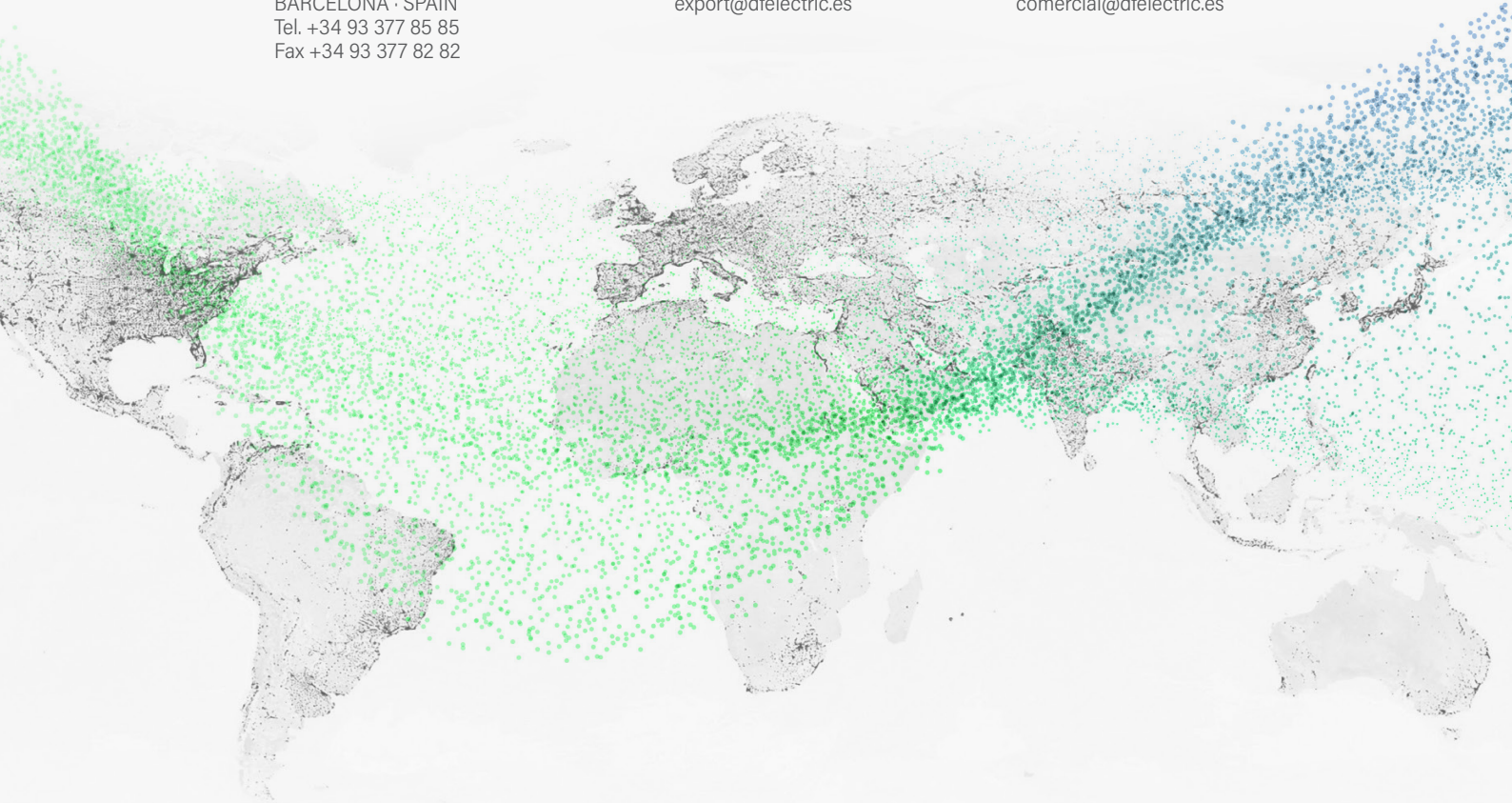
SILICI, 67-69
08940 CORNELLA DE LLOBREGAT
BARCELONA · SPAIN
Tel. +34 93 377 85 85
Fax +34 93 377 82 82

INTERNATIONAL SALES

Tel. +34 93 475 08 64
Fax +34 93 480 07 75
export@dfelectric.es

NATIONAL SALES

Tel. 93 475 08 64
Fax 93 480 07 76
comercial@dfelectric.es



dfelectric.es



According to the waste of electrical and electronic equipment directive, electrical material should not be part of the usual waste. This symbol alerts users that these products should be recycled according to local environmental waste disposal regulations.



The "electro technical expert" logo marked on the products included in this data sheet indicates that the installation of these products must be carried out by expert personnel with specialized knowledge.



To prevent electrical hazards, carry out the installation without voltage.



Safety notice
Please capture the following QR code and read our safety notice carefully before installing our products.



The data reflected in this technical record are subject to the correct installation of the product in accordance with manufacturer's instructions, relevant installation standards and professional practices, maintained and used in applications for which they were made.

The products described in this document have been designed, developed and tested in accordance with specific standard. They are considered components that are integrated as part of installation, machine or equipment. The correct general operation of the referred product is responsibility of the manufacturer of the installation, machine or equipment.

DF ELECTRIC cannot guarantee the characteristics of an installation, machine or equipment that has been designed by a third party. Once a product has been selected, the user must verify that it is appropriate for its application, through the verifications and/or tests that it deems appropriate.

DF ELECTRIC retains the right to change the dimensions, specifications, materials or design of its products at any time with or without notice.

©2024 DF Electric. All rights reserved